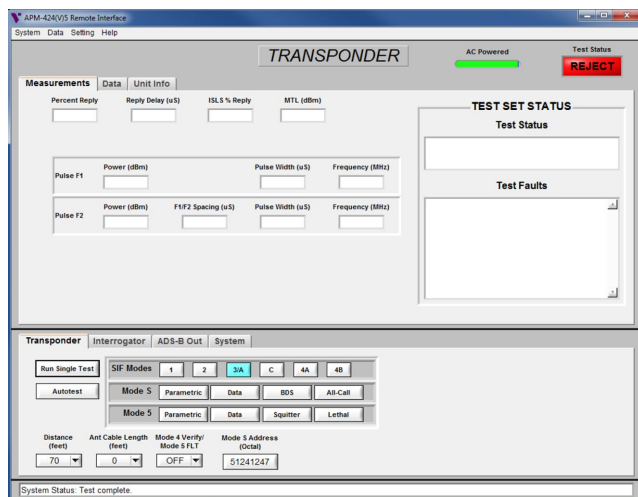


APM-424(V)5 Remote Interface Software

The APM-424(V)5 remote control GUI allows the operator to control the APM remotely-424(V)5 for transponder, interrogator, TCAS, and ADS-B testing. The GUI is installed on a windows-based platform and communicates to the APM-424(V)5 through an RS-232 communications interface. The GUI is included with the APM-424(V)5 operator manual CD, part number 86805 or is accessed via the help menu in the GUI.

Transponder testing:



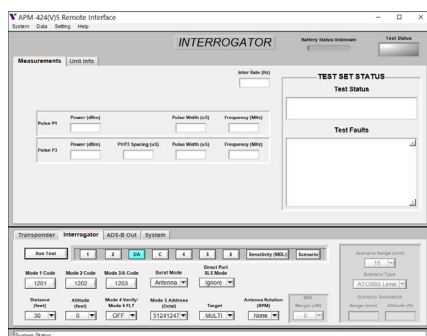
Modes 1,2,3,C,4,S and 5

Communicate with the APM424(V)5 through an RS-232 interface from your Windows-based device.



The GUI allows users to access the APM-424(V)5 functionality without observing the setup, operation, or test results through the viewfinder. Simply choose your method of operation: over the air test, direct connect, or connect via antenna couplers. Then, connect the test set to your Windows-based control device through RS-232, start the remote interface and control the APM-424(V)5 test functions on the PC.

Interrogator testing:



ADS-B testing:



System Status:

