

## QUICK CARD

### 4100-series Expert OTDR

This quick card explains how to connect to a fiber under test, configure EXPERT OTDR test settings using Quick Setup, run tests, and analyze results on a VIAVI ONA-1000 equipped with a 4100-series OTDR module.

- ▶ ONA-1000 equipped with the following:
  - Fiber Optics Software Release V21.12 or greater
  - 4100 Series OTDR Module
  - Fiber optic cleaning and inspection tools
- ▶ 20-meter Fiber optic patch cable (Launch Cable)
- ▶ Optical Coupler to connect Launch Cable to Fiber Under Test



Figure 1: Equipment Requirements

- ▶ Use the VIAVI P5000i or FiberChek Probe microscope to inspect both sides of every connection being used (OCC Port, Launch Cable, bulkhead connectors, patch cables, etc.)
- ▶ Focus fiber on the screen. If dirty, clean the end-face.
- ▶ If it appears clean, run inspection test.
- ▶ If it fails, clean the fiber and re-run inspection test. Repeat until it passes.

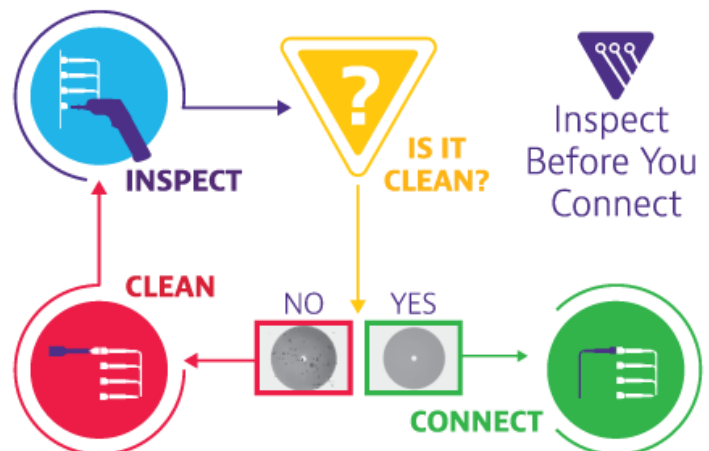


Figure 2: Inspect Before You Connect

## QUICK CARD

### CONNECT TO FIBER UNDER TEST (FUT)

All fibers and connectors should be inspected and clean prior to connection, as described on page 1. The OTDR may be connected to the FUT via an optical patch panel (OPP) or a coupler:



Figure 3: OTDR Port Inspection

1. Inspect the OTDR port on top of the test set.
2. Inspect the fiber end face of the Launch Cable.
3. Connect the Launch Cable to the OTDR port.
4. If the interface to the FUT is a patch cord, connect the patch cord to an optical coupler.
5. Inspect the FUT connected to the coupler or OPP port and the fiber end face of the Launch Cable.
6. Connect the Launch Cable to the coupler or OPP port.

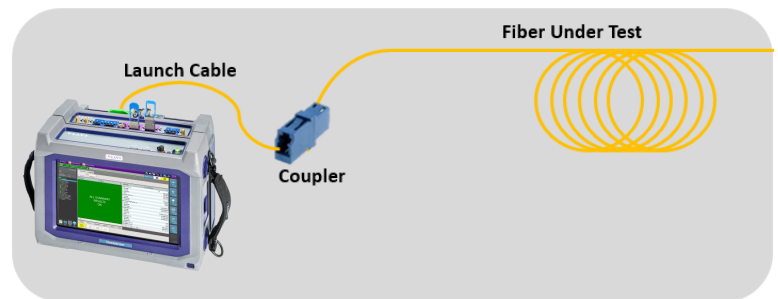


Figure 4: Connecting to coupler

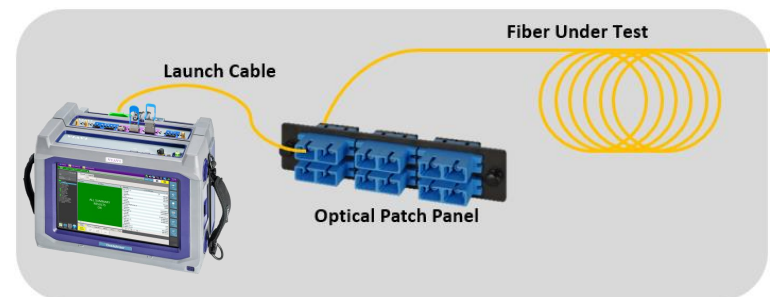





Figure 5: Connecting to OPP

### LAUNCH TEST

1. Press the Power button  on the top of the OneAdvisor to start the test instrument.
2. Tap the **Tests** icon  Tests
3. Select the OTDR Module **Fiber 1 (4126 MA2)**
4. Tap the **OTDR EXPERT** icon 

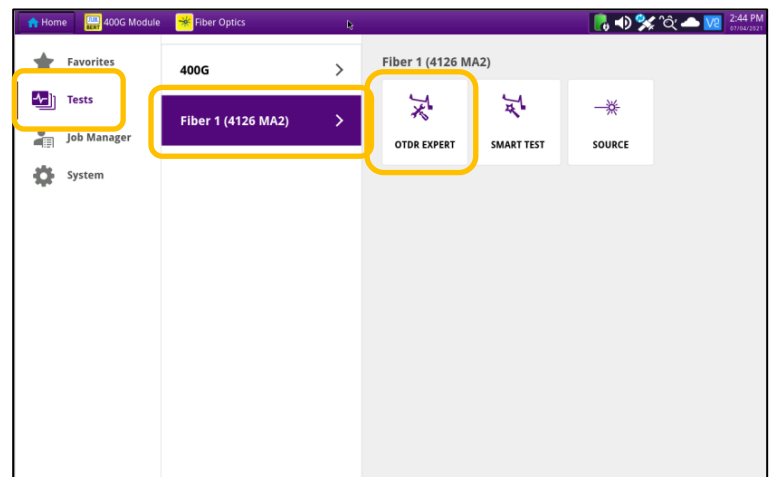



Figure 6: Fiber Optics Home Screen

## QUICK CARD

### CONFIGURE TEST

1. Tap the **Setup** soft key 
2. Tap **Display** and set **Distance Unit** to your desired unit of measure.
  - ▶ **Laser:** Select the wavelength(s) to test.
    - Select **All** or select **1310 nm** and **1550 nm** to enable bend detection.
  - ▶ **Acquisition Mode:**
    - Select **Manual** to manually to enter Range and Pulse width settings.
    - Select **Auto** to automatically configure Range, Pulse width, and Resolution settings.
    - Select **SmartAcq** to perform an acquisition with a short pulse width, followed by an acquisition with a longer pulse width. The first acquisition allows events at the beginning of the fiber to be detected more precisely.
  - ▶ **Acq. Time:** Select Realtime, Auto or the desired time to sample the fiber.
  - ▶ **Launch Cable:** Select and enter **Length** if you are using a Launch Cable. Enter 20 meters or 66 feet for Viavi supplied 20-meter launch cables.
4. Tap **Alarms** and configure pass/fail criteria:
  - ▶ Set **Alarm Level** to **Fail**.
  - ▶ Set **Threshold** to **Default**, or select alternate alarm thresholds (TIA-568.3, User, etc.)

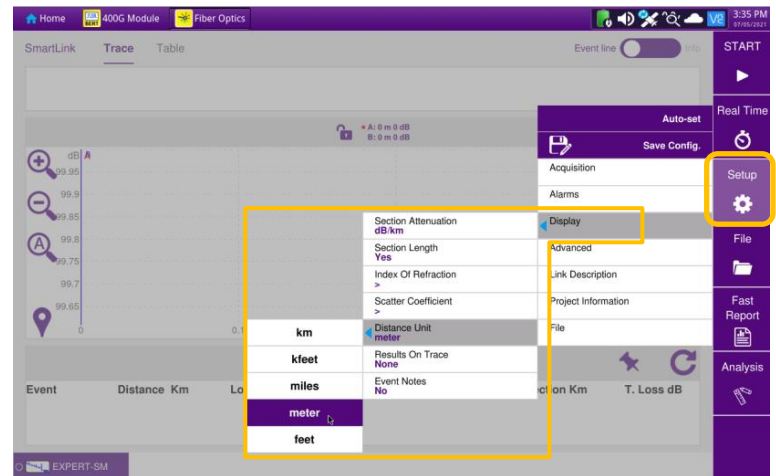


Figure 7: Setup, Display

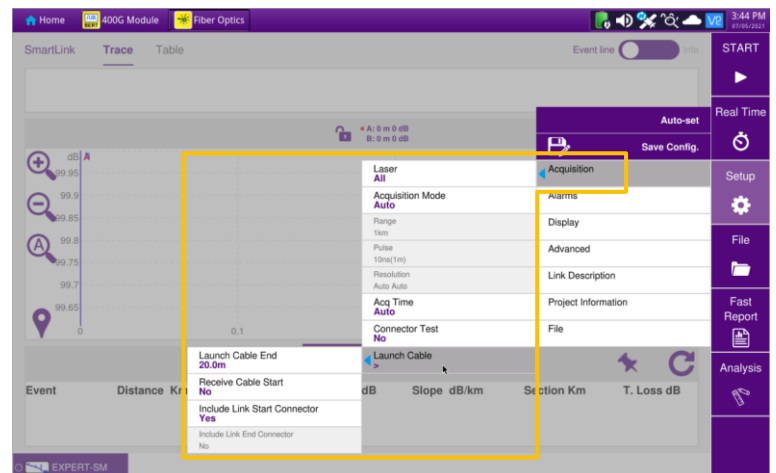


Figure 8: Setup, Acquisition

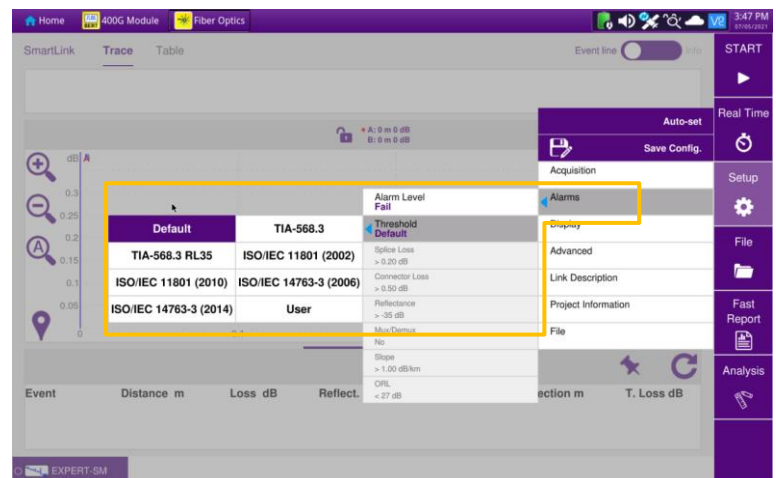



Figure 9: Setup, Alarms

## QUICK CARD

### RUN TEST

1. Press the Start soft key  to start the test. After auto-configuration, the OTDR will perform a connection check to ensure that the connection is **Good**. If the Connection is **Bad**, disconnect the launch cable, and reconnect as described on pages 1 and 2, cleaning every fiber that fails the inspection test.
2. The OTDR will perform an acquisition at the configured wavelength.

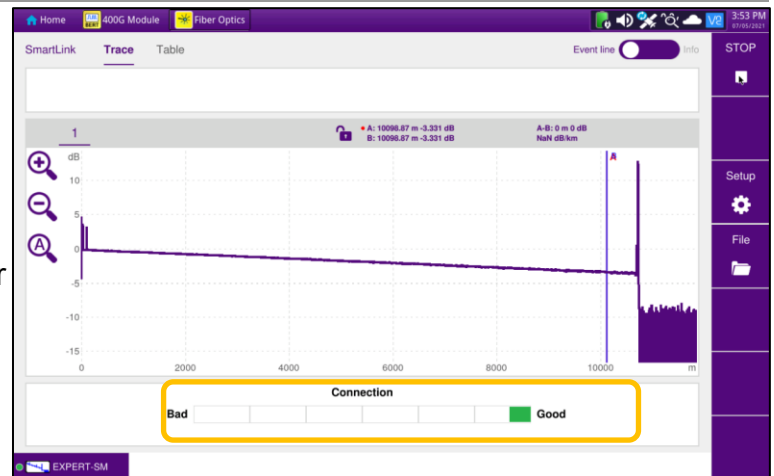


Figure 10: Connection Check

### VIEW SMARTLINK MAP

1. Tap the **SmartLink** tab at the left screen top to select SmartLink view.
2. Set the toggle switch at the right screen top to **Event Line**.
3. View SmartLink results:
  - ▶ The FUT is displayed as a series of icons representing events (front connector, launch cable, connectors, splices, bends, etc.) and distances. Swipe left or right to view additional icons on spans with more than 4 events.
  - ▶ The center of the display shows summary results for the entire span for each acquisition or wavelength. Tap any event in the upper display to view detailed results for that specific event.
  - ▶ Events are marked with a green check or red **x** based on the Alarms setting.

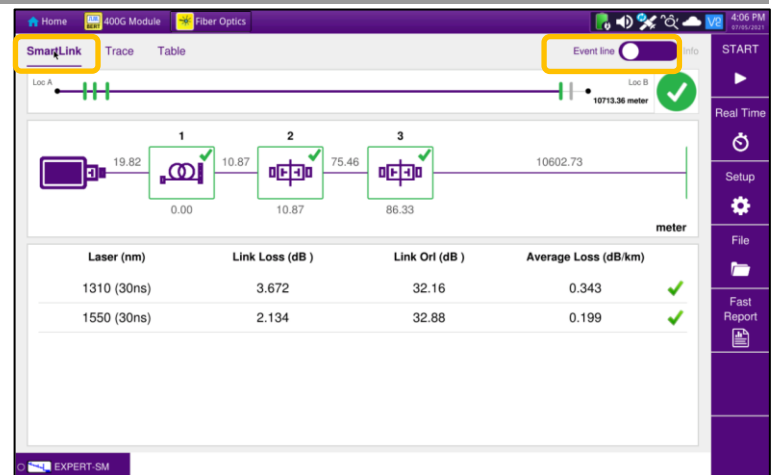


Figure 11: SmartLink View, Summary Results

**Note:** the icon-based view may not be available on older ONA-1000s when acquisition **Mode = SmartAcq**. Rerun the test with **Mode = Auto** or contact VIAVI to upgrade your unit to add this feature.

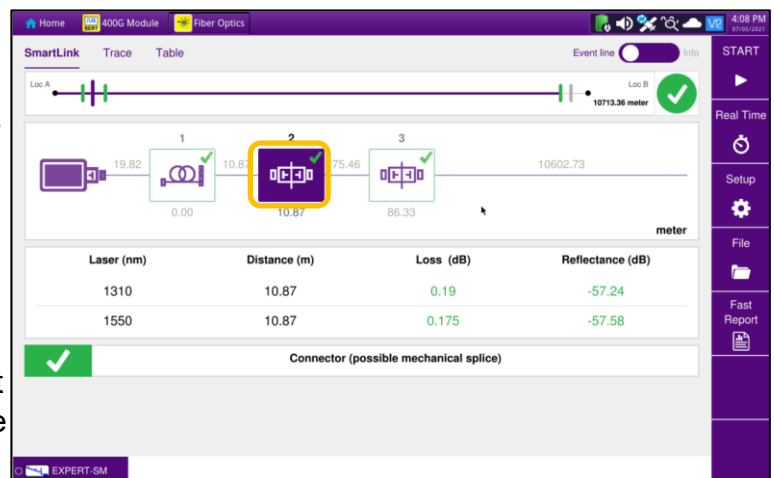



Figure 12: SmartLink View, Event Results

## QUICK CARD

### VIEW TRACE

1. Tap the **Trace** tab at the left screen top to select **Trace view**.
2. Set the toggle switch at the screen top to **Info**.
3. Tap  to auto-zoom.
4. View trace results:
  - ▶ Trace information is shown in the upper display.
  - ▶ Graphical results (dB versus distance) are shown in the center display.
  - ▶ A color-coded **Event table** is shown in the lower display. Swipe up and down to view all events.

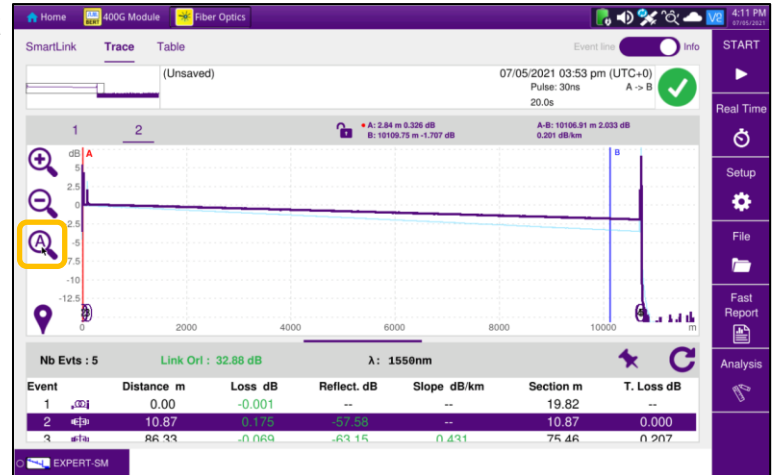
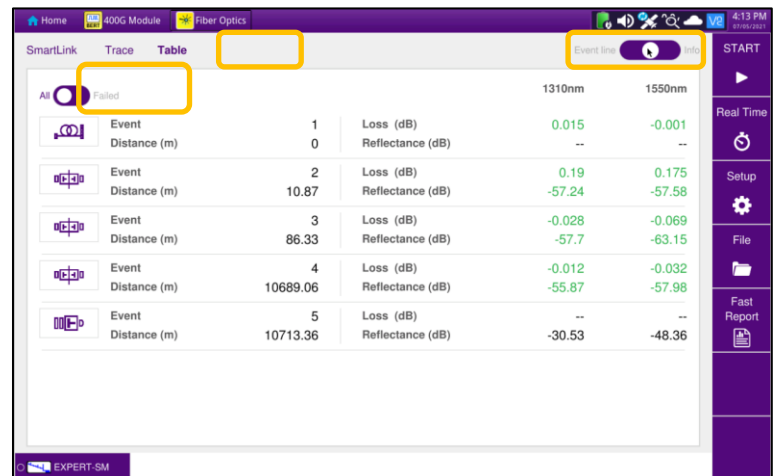


Figure 13: Trace view

### VIEW TABLE

1. Tap the **Table** tab at the left screen top to select **Table view**.
2. Set the toggle switch at the right screen top to the center (off) position.
3. View table results:
  - ▶ Distance, Loss, and Reflectance are shown for each event.
  - ▶ Tap the toggle switch to view All events or Failed events.






Event	Distance (m)	Loss (dB)	Reflectance (dB)	T. Loss (dB)
1	0	0.015	--	-0.001
2	10.87	0.19	-57.24	-57.58
3	86.33	-0.028	-57.7	-63.15
4	10689.06	-0.012	-55.87	-57.98
5	10713.36	--	-30.53	-48.36

Figure 14: Table view

## QUICK CARD

### FAST REPORT

1. Tap the **File** soft key  and tap the **Project** folder.
2. Tap the **Create Directory** soft key  and enter a name for your new folder. All trace files will be saved to this directory.
3. Tap the **Exit** soft key .

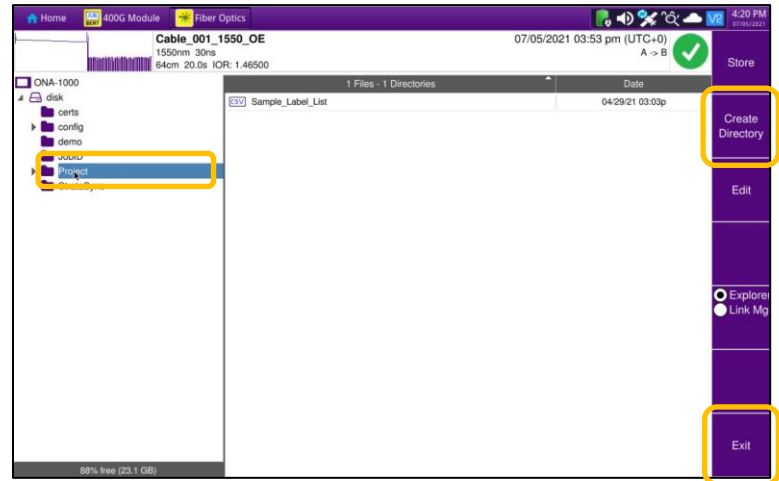




Figure 15: File Explorer

4. Tap the **Fast Report** soft key  and enter **Cable ID, Fiber Number, Locations, Direction, and Save Mode**.
5. Tap **Save**.
6. Tap  to accept the default filename and save test results.
7. Tap the **Fast Report** soft key again to return to the results display.

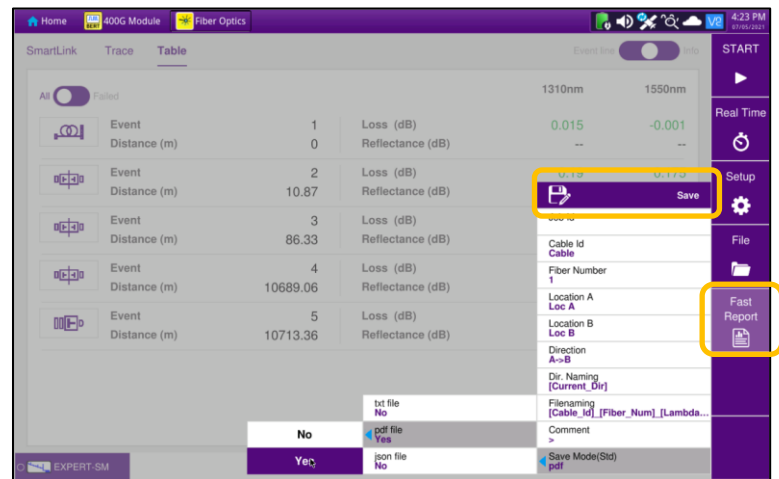


Figure 16: Fast Report